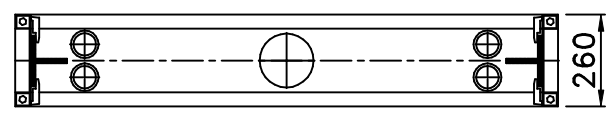
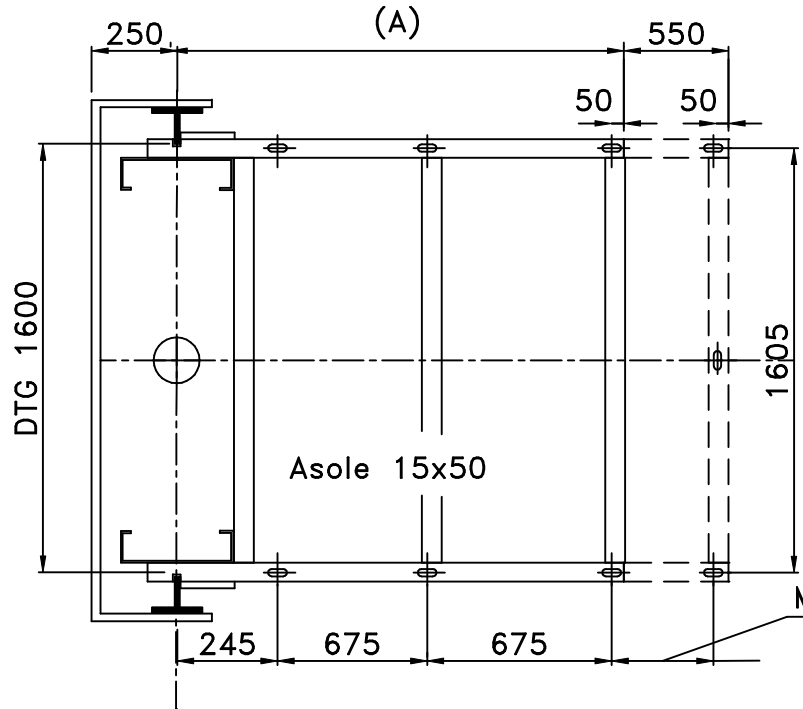
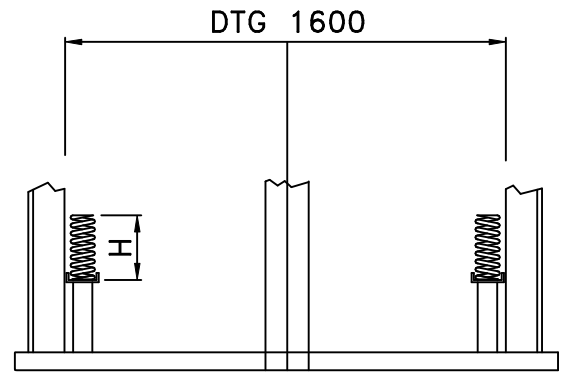
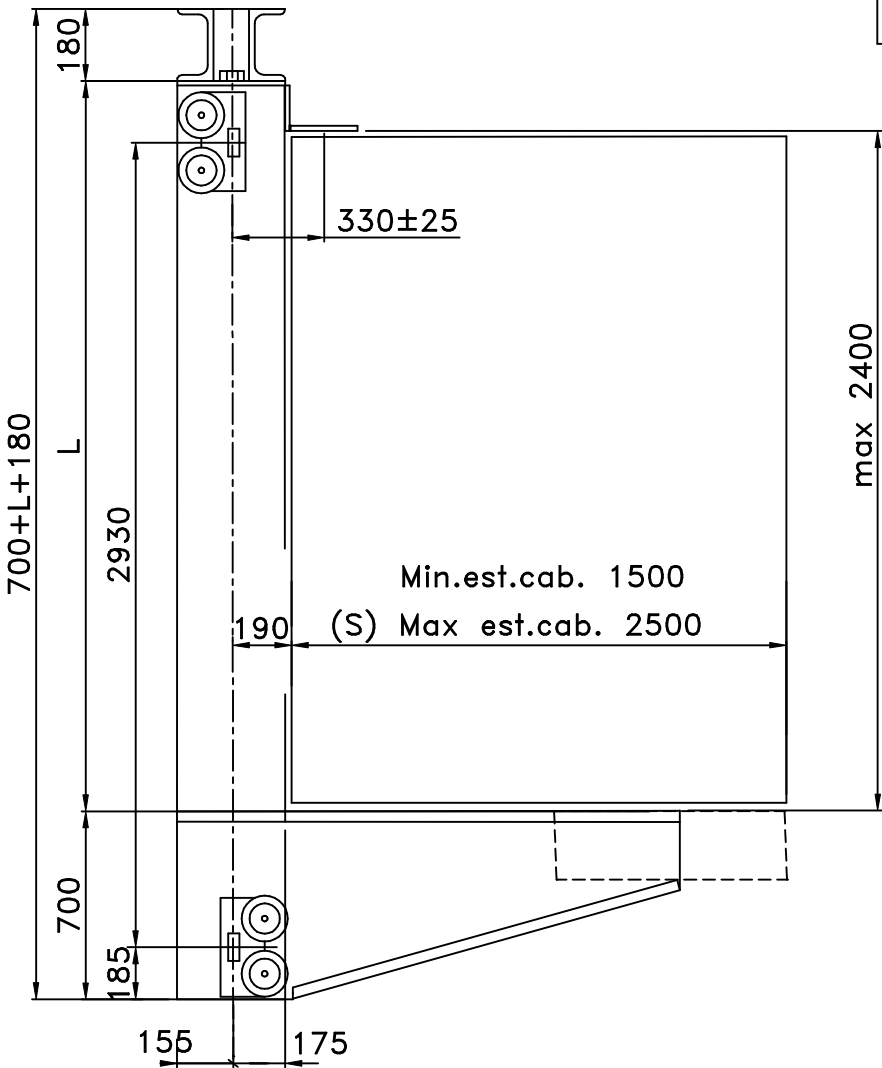


ARCATE IDRAULICHE IN TAGLIA
TIPO DL7



(S)	(A)
1500	1645
2000	2145
2500	2145

Max 500 con passo 50mm

Ammortizzatori disponibili	
∅ filo	H
15	225
18	250

DATI TECNICI ARCATI TIPO "7"	
PORTATA	Kg 2000 - 2500
PESO ARCATI	Kg 500
TIPO GUIDE	T 125x82X16
PISTONE	∅ 180 MAX
MOLLE	N° 3+3 ∅ 18

