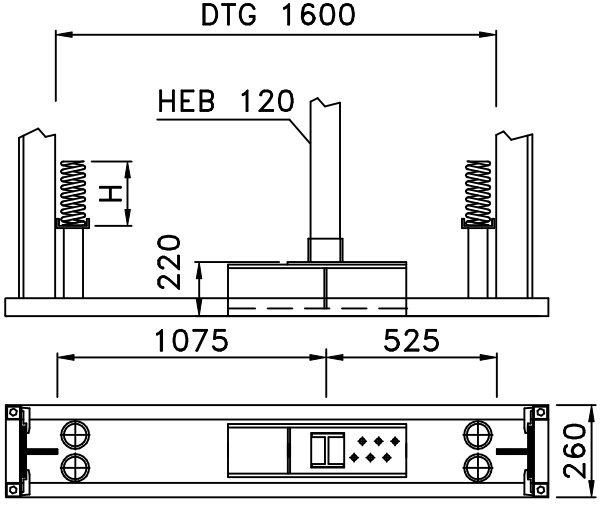
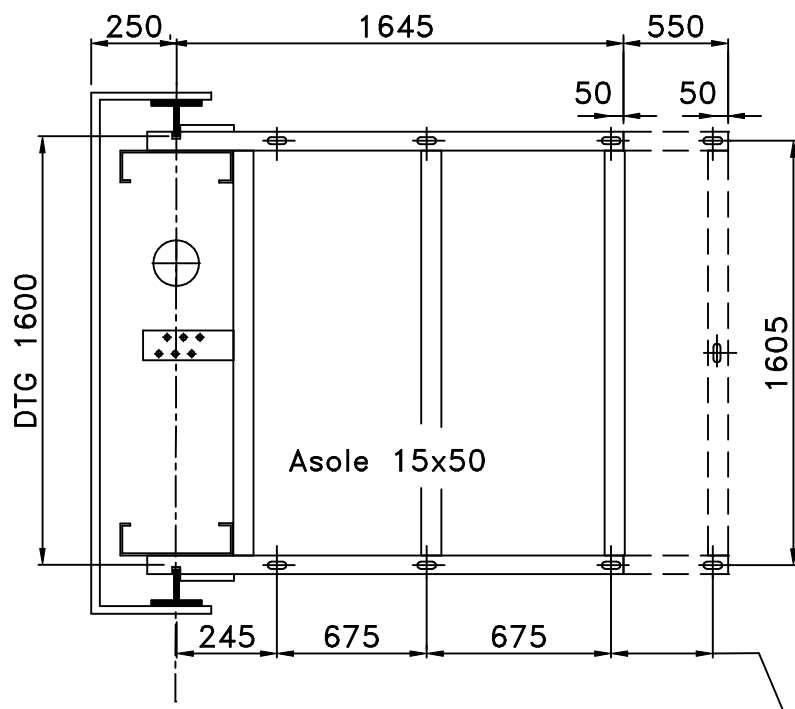
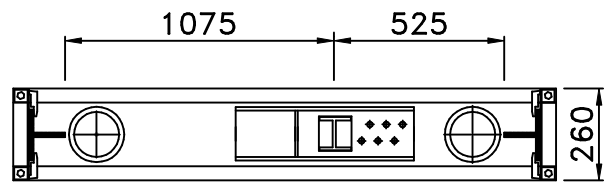
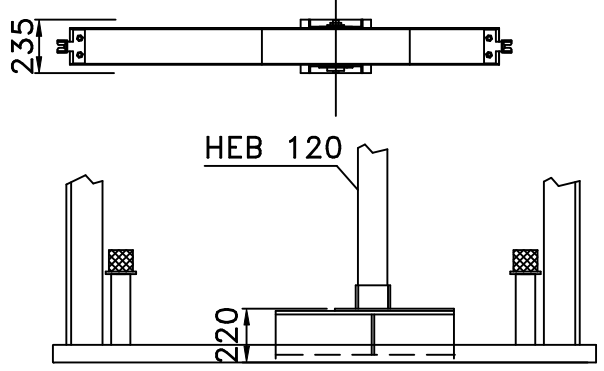
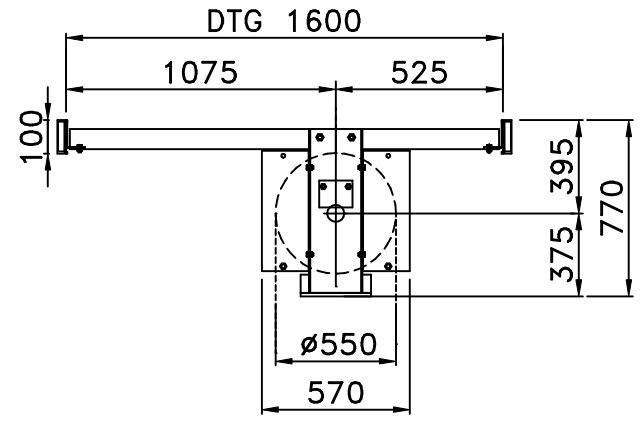


ARCATE IDRAULICHE IN TAGLIA  
TIPO 6



Max 500 con passo 50mm

DATI TECNICI		ARCATA TIPO "6"
PORTATA		Kg 1500 - 2000
PESO ARCATA		Kg 450
PESO ARCATINA		Kg 130
DIAMETRO PULEGGIA		ø 550
DIAMETRO FUNI		ø 13 N°6
TIPO GUIDE		T 125x82X16
PISTONE		ø 180 MAX
MOLLE		N° 2+2 ø 18
PUFFER		N° 2 ø140X100

Ammortizzatori disponibili		
PEZZI	ø filo	H
4	18	250

AMMORTIZZATORE IN POLIURETANO  
ø140 H=100

