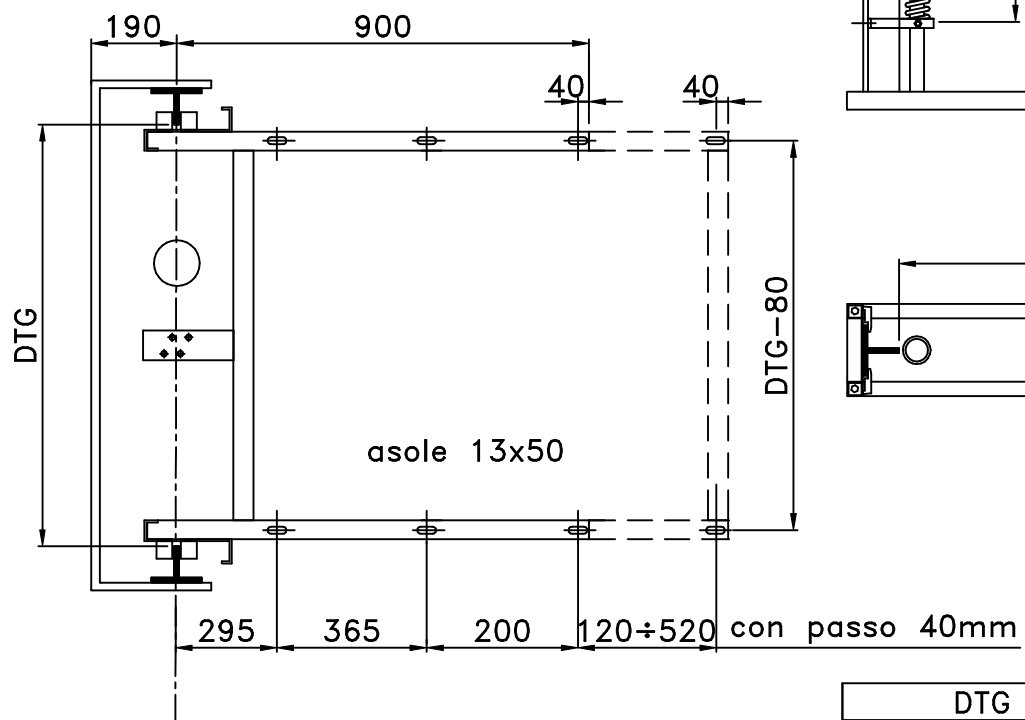
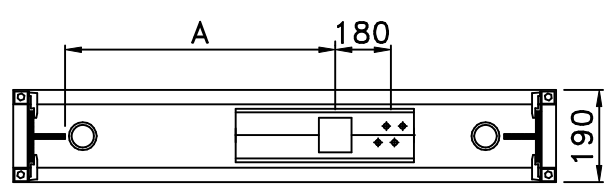
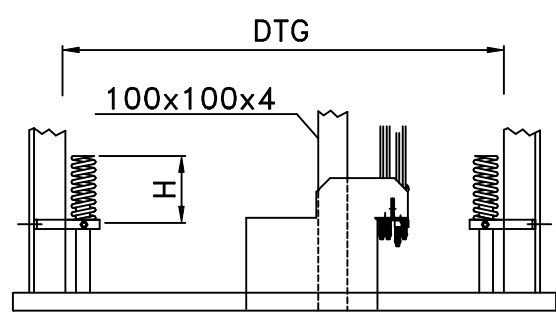
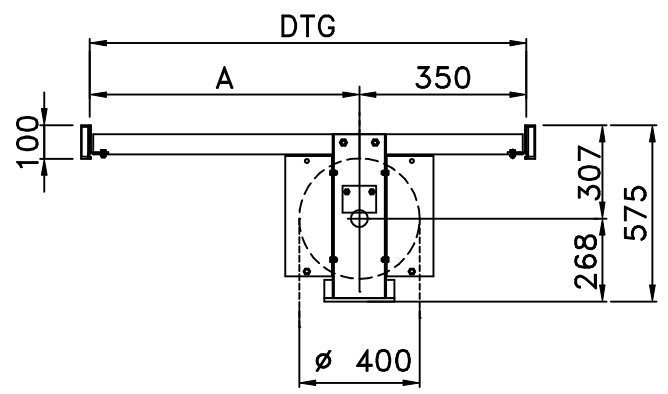
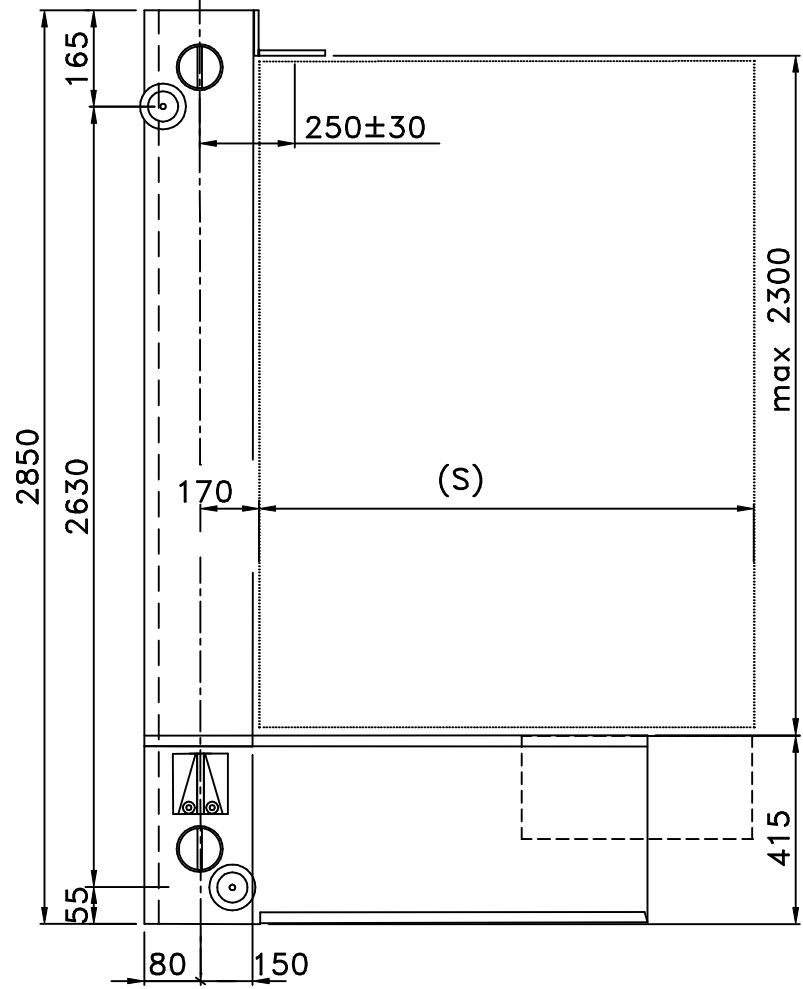


ARCATE IDRAULICHE IN TAGLIA
TIPO 2



DTG	A
800	450
950	600

Ammortizzatori fondo fossa		
N°	∅ filo	H
2	14	240
2	15	225

DATI TECNICI		ARCATA TIPO "2"
PORTATA	kg	480
PESO ARCATA	Kg	160
PESO ARCATINA	Kg	45
DIAMETRO PULEGGIA	∅	400
DIAMETRO FUNI	∅	10 N°4
TIPO GUIDE		T70-T80
PISTONE	∅	120 MAX
SBALZO MAX CABINA (S)		1200-1400
TIRO FUNI MAX	daN	1150

