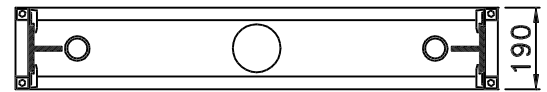
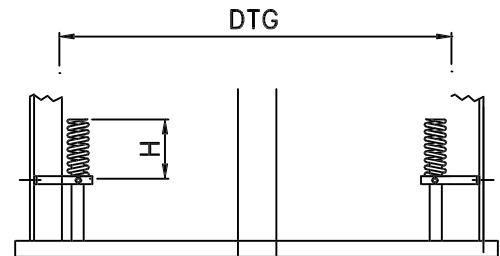
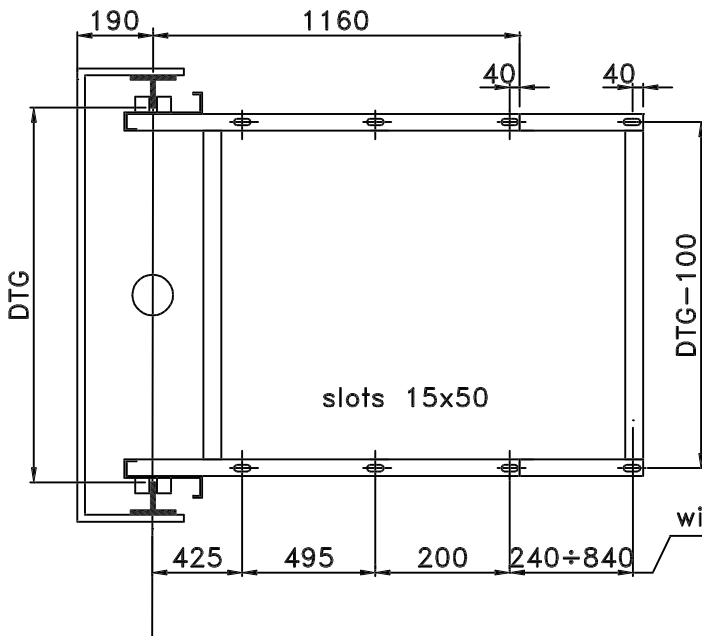
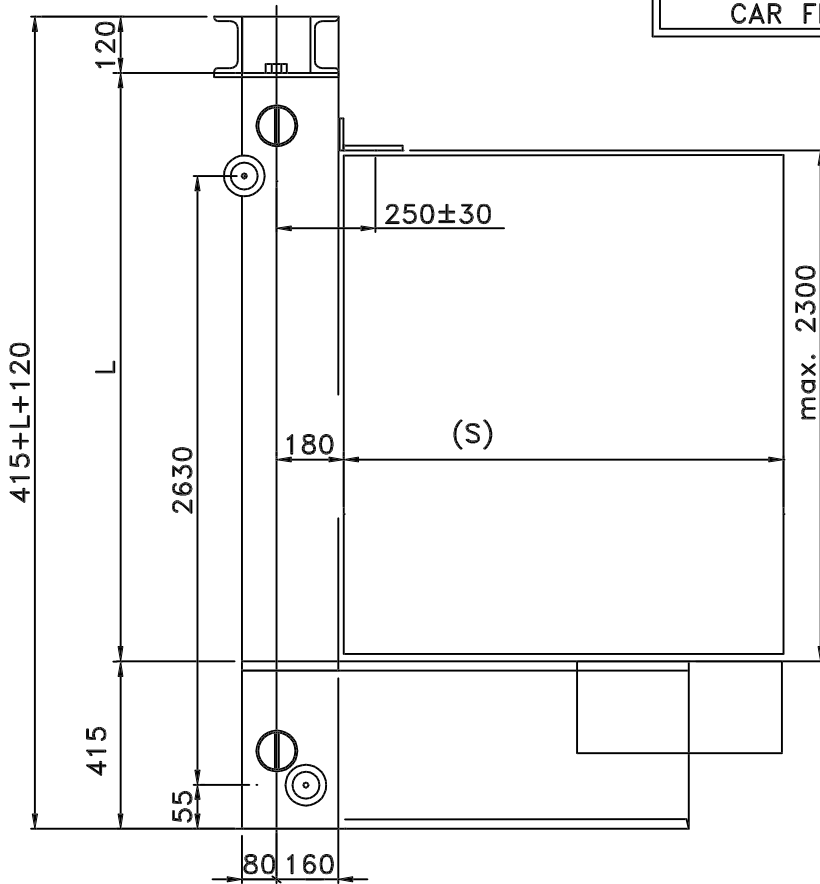


HYDRAULIC DIRECT SIDE ACTING  
CAR FRAME TYPE DL4



with pitch 40mm

CAR FRAME TYPE DL4 TECHNICAL DATAS

LOAD	kG 1000
CAR FRAME WEIGHT	Kg 200
CAR GUIDES TYPE	T80 T90 T125
PISTON	∅ 130 MAX.
CAR MAX.PROJECTING PART(S)	1850
DTG	1100-1250

spring buffers

No.	∅ wire	H
2	15	225
2	18	250

