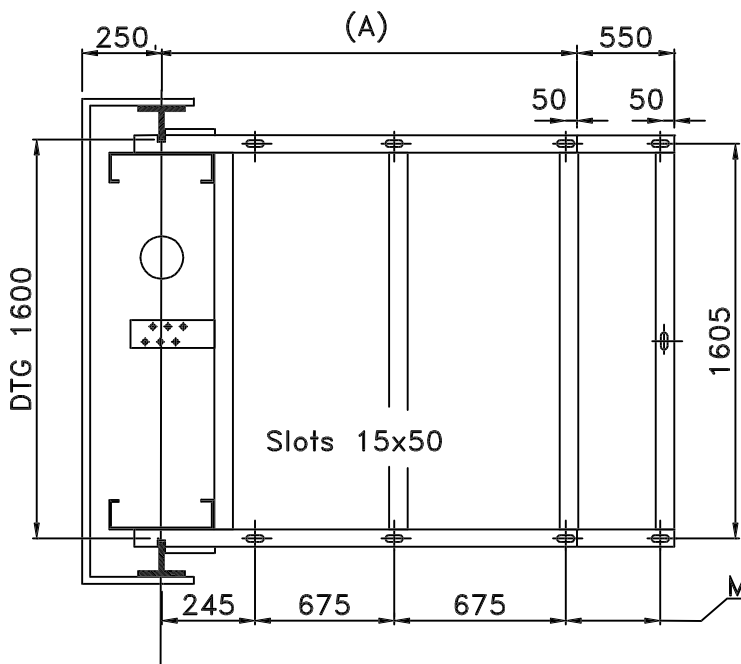
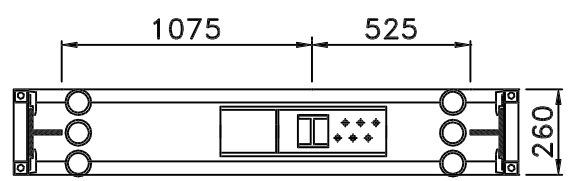
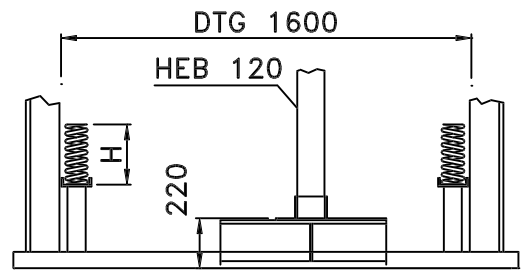
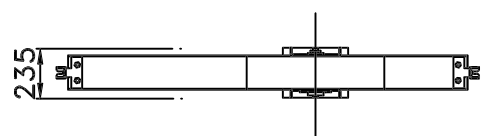
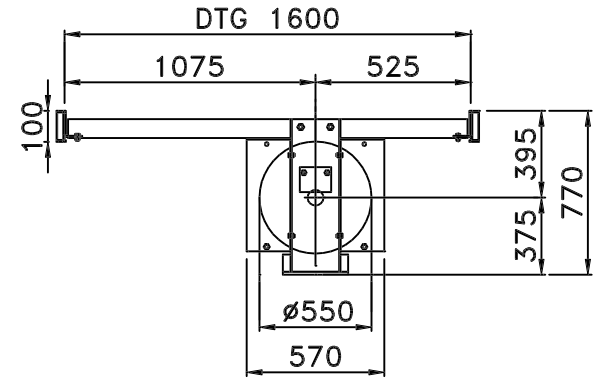


HYDRAULIC INDIRECT ACTING
CAR FRAME TYPE 7



CAR FRAME TYPE 7 TECHNICAL DATAS	
LOAD	Kg 2000 - 2500
CAR FRAME WEIGHT	Kg 500
PULLEY WITH FRAME WEIGHT	Kg 130
PULLEY DIAMETER	∅ 550
WIRE ROPES DIAMETER	∅ 13 No.6
CAR GUIDES TYPE	T 125x82X16
PISTON	∅ 180 MAX.
SPRINGS	N° 3+3 ∅ 18

(S)	(A)
1500	1645
2000	2145
2500	2145

available spring buffers	
∅ wire	H
15	225
18	250

