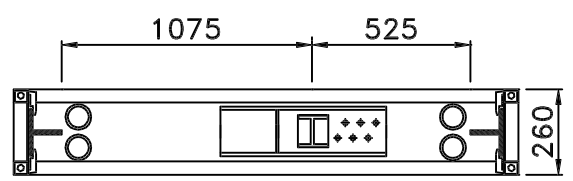
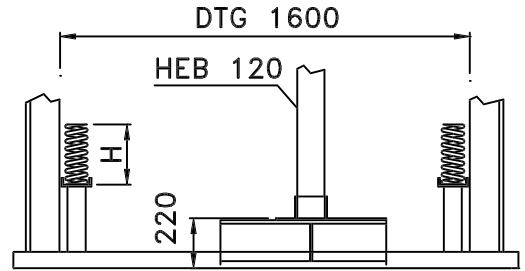
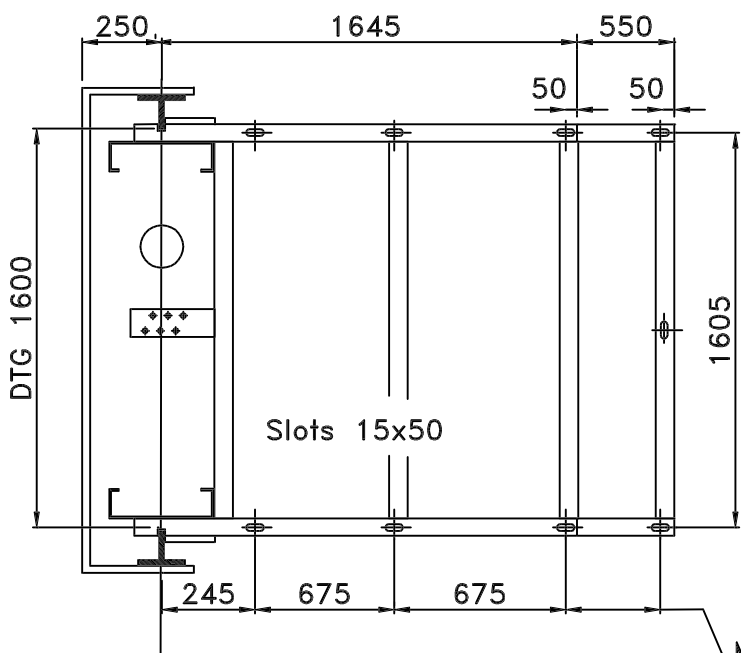
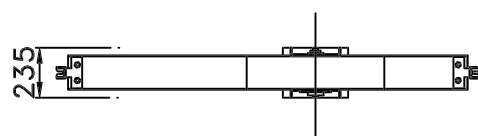
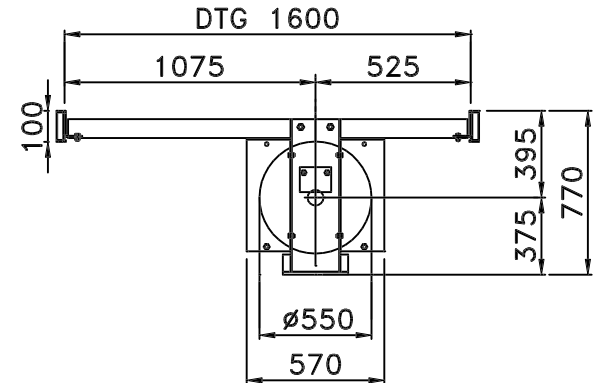


HYDRAULIC INDIRECT ACTING
CAR FRAME TYPE 6



Max. 500 with pitch 50mm

CAR FRAME TYPE 6 TECHNICAL DATAS	
LOAD	Kg 1500 - 2000
CAR FRAME WEIGHT	Kg 450
PULLEY WITH FRAME WEIGHT	Kg 130
PULLEY DIAMETER	Ø 550
WIRE ROPES DIAMETER	Ø 13 No.6
CAR GUIDES TYPE	T 125x82X16
PISTON	Ø 180 MAX.
SPRINGS	No. 2+2 Ø 18

available spring buffers	
Ø wire	H
15	225
18	250

